

Resized Tubes

Features

- Various material qualities available
- Outside diameter from 45 mm to 1,000 mm
- Maximum length 4,000 mm
- Different wall thicknesses up to 8 mm

Advantages

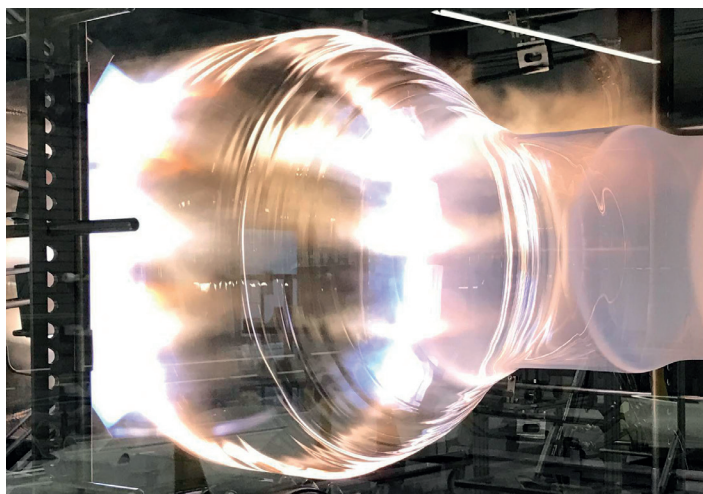
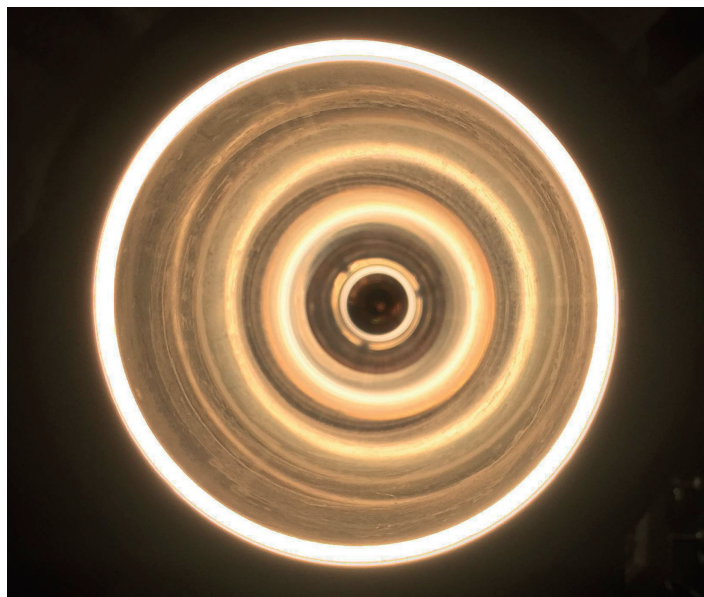
- Customized specification on request
- Precise dimensional shape
- High purity for semiconductor processes

Resized Tubes

Raesch Quarz (Germany) GmbH refines quartz glass tubes for high-tech manufacturing processes in its **own Resize Center**, which were previously drawn in a single-step drawing procedure.

Our employees produce first-class process tubes on **powerful glass lathes**. In a rotational process, we achieve a **maximum outside diameter of 1,000 mm**.

In the semiconductor industry, our Resized Tubes are perfectly suited as a process reactor due to their **excellent temperature stability and purity**. Thanks to its high **degree of purity**, the material provides the best basis for refining wafers. The **good chemical resistance** makes our quartz glass the ideal reaction vessel for the treatment of aggressive waters and acids.




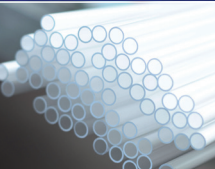

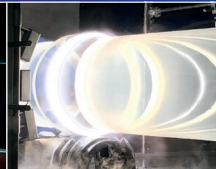



Characteristics

Raesch Quarz (Germany) GmbH exclusively uses **high-quality US raw materials** for the production of quartz glass tubes.

Selected quartz sand enables optimal material properties.

In a single-step drawing process, we produce **first-class feedstock tubes**. That is why our Resized Tubes always meet the highest demands in terms of dimensional accuracy and siding, from which our customers benefit in numerous industries.

Raesch Quarz (Germany) GmbH produces quartz glass tubes with individual, customer-specific dimensions in terms of outer diameter, length and wall thickness.

hönle group		Translucent Quartz	Quartz glass rods	Resize tubes	Quartz tubes	Components
						
aladin	eleco panacol-efd	eltosch grafix	hönle	panacol	printconcept	raesch
uv-technik speziallampen						



Raesch Quarz (Germany) GmbH, In den Folgen 3, 98693 Ilmenau, Germany
Phone: +49 3677 4696-0, Fax: +49 3677 4696-3690. www.raesch.net

Operating parameters depend on production characteristics and may differ from the foregoing information.
We reserve the right to modify technical data. © Copyright Raesch GmbH. Updated 07/19.